

Revised December 2014



LIGHT KIT
WILL FIT CLUB CAR® DS®
MJLK1001



INCLUDED:

- 2 Headlights
- 2 Tail Lights
- Wiring Harness
- Screws
- Straps
- Rocker Switch

TOOLS NEEDED:

- Phillips Head Screw Driver
- Cutting Tool
- Sandpaper
- Power Drill
- 15/32 Drill Bit

Harness



Headlights



Tail Lights

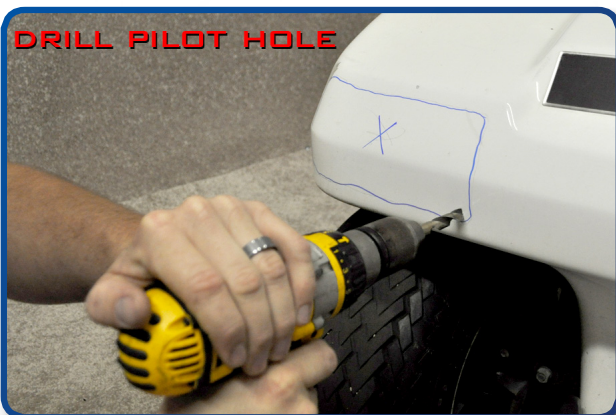
Madjax recommends professional installation. If you choose to not have this product installed by a professional, we highly recommend that you exercise caution, care, and patience when installing this product as it involves drilling holes into your cart's body.

1
Cut out template and place it against cart using the body lines for alignment.

**PLACE
TEMPLATE**



DRILL PILOT HOLE



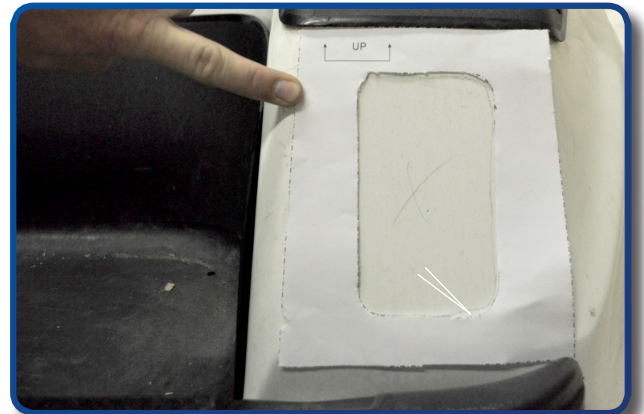
2
Draw the inside of the template out with a writing utensil. Next drill a pilot hole so you will have a starting point to begin cutting.

Using the template you drew on the cart, use a rotary tool to cut out the light area of the cowl starting at the pilot hole from step 2.



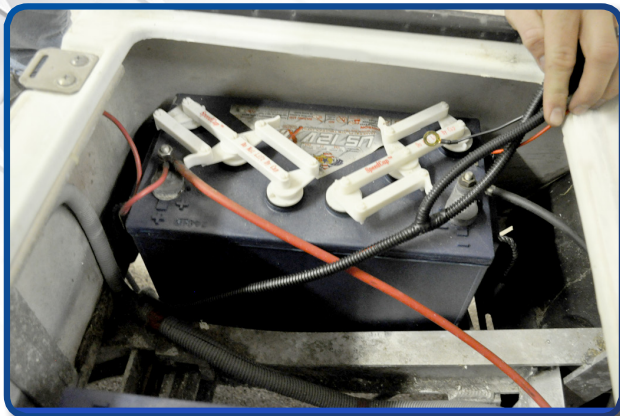
Place headlight into the front of the vehicle. Insert four screws into headlight using supplied hardware.
*Repeat process on opposite side

Place tail light template against cart. Using a writing utensil, draw the template onto the cart.



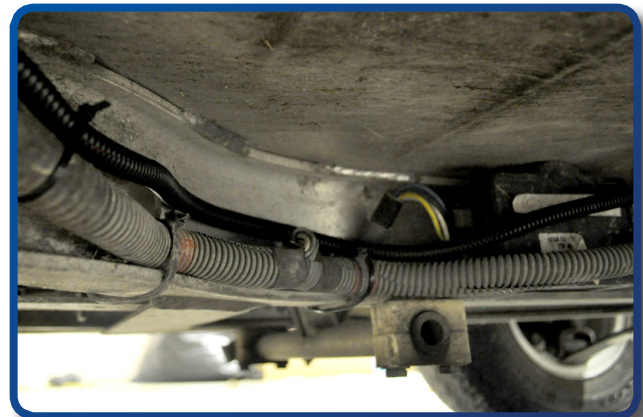
Drill a pilot hole and cut out the shape of the tail light.

7
Insert tail light and attach tail light to cart using provided hardware.



8
Run wiring harness down the side of the frame of the cart as shown. Feed wiring harness through battery compartment to front of cart.

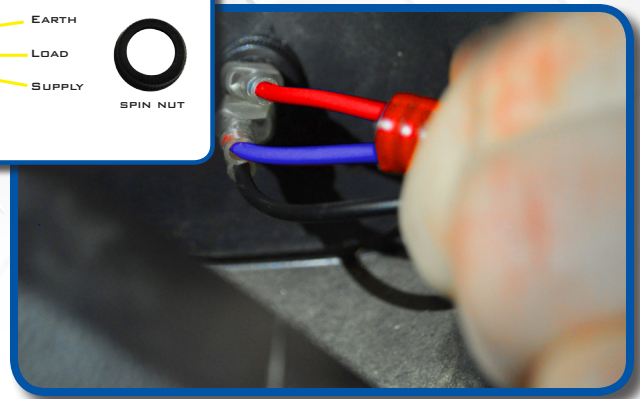
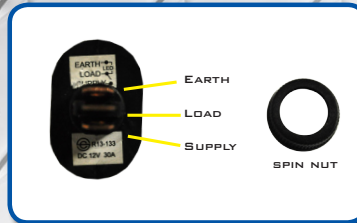
9
Run wiring harness beside the frame so it doesn't hang. Secure it with wire ties to keep it in place while you are riding.



10
Using a 15/32" drill bit, drill out the hole for the rocker switch. Drill Gently. Remove key switch cover.

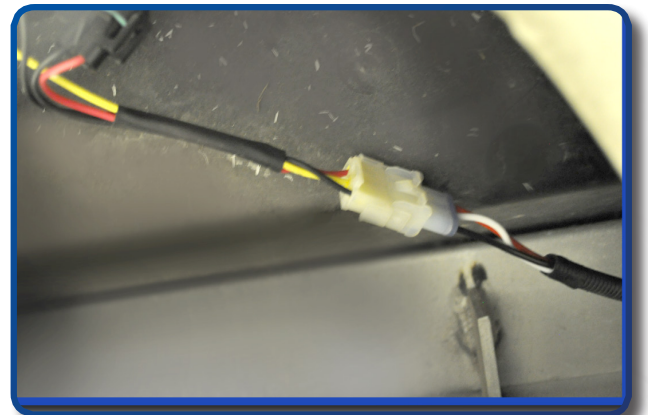
Feed threaded end of switch through the dash where the hole was drilled. Tighten and attach harness as shown.

Earth - Ground (black)
Load - 12v(+) switched (blue)
Supply - 12v(+) constant (red)



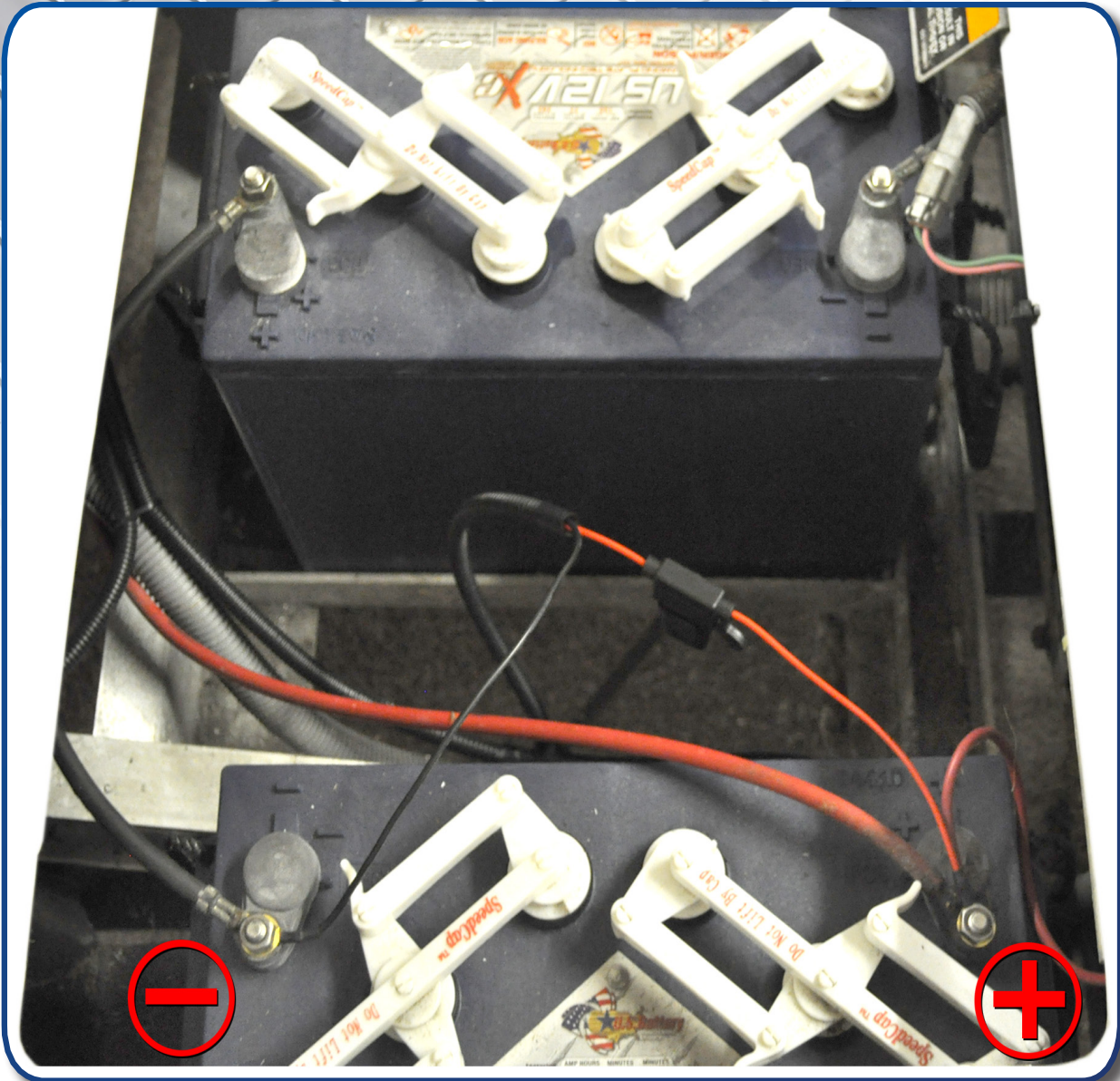
Re attach dashboard as shown.

Plug headlights and tail lights into harness as shown.



Secure remaining harness under cowl using provided ties.





If you have 12 volt batteries wire the harness to the battery as shown. If you have 8 Volt batteries a Madjax 16/12 voltage reducer will be necessary.

CAUTION: THIS LIGHT KIT IS A 12V SYSTEM. SUPPLYING MORE THAN 12V TO THE SYSTEM WILL DAMAGE THE LIGHT KIT AND VOID YOUR WARRANTY. DO NOT OVERLOAD.

INSTALLATION COMPLETE

E-Z-GO®, E-Z-Go® TXT®, and E-Z-Go® RXV® are registered trademarks of Textron Innovations, Inc. Club Car®, Club Car® Precedent®, and Club Car® DS® are registered trademarks of Ingersoll Rand, Inc. Yamaha®, Yamaha® Drive®, G-14®, G-16®, G-19®, and G-22® are registered trademarks of Yamaha Golf-Car Company. Any reference to Club Car®, E-Z-Go®, or Yamaha® or their associated trademarks, word marks, and products are only for purposes of identifying golf carts with which this Madjax product is compatible. Madjax products are aftermarket parts and are not original equipment parts. Madjax is not connected to, affiliated with, sponsored by, or endorsed by either Textron Innovations, Inc., Ingersoll Rand, Inc., Yamaha Golf Cart Company, or any of their parent or subsidiary companies.



QUICK TIPS & TROUBLESHOOTING

Troubleshooting tips reflect common issues among all light kits. Some information stated below may regard to other Madjax Light kits. If you have more questions please contact customer service 866-410-5297.

The headlights won't stay adjusted?

Make sure the adjustment screw is tight and if it will not stay tight you can add a star washer to help hold it in place.

Everything is connected and nothing is working?

Make sure you are getting at least a full 12 volts at the light kit. Unplug each light to make sure it is not a short in one of the lights. Check the inline fuse connected to the positive battery post to make sure it is not blown.

**PLEASE VISIT WWW.MYMADJAX.COM
FOR MORE INSTALLATION
VIDEOS AND SUPPORT**

BASIC HARNESS

- BLACK = GROUND
- RED = 12V SWITCHED
- WHITE = 12V SWITCHED
- RED2 = 12V CONSTANT
- BLUE = 12V SWITCHED

